

# Detector Switches

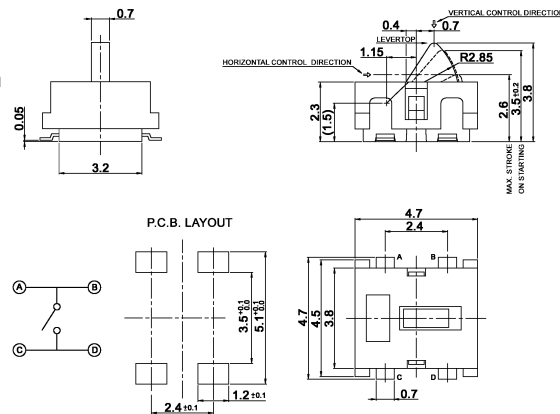
## Specifications:

|                        |  |
|------------------------|--|
| Contact rating:        | 5V DC, 1 mA  |
| Contact resistance:    | < 1 Ω  |
| Insulation resistance: | > 100 MΩ   |
| Dielectric strength:   | 100 V, 50 Hz for the duration of 1 minute  |
| Operating temperature: | -40 °C to +85 °C   |
| Operating force:       | < 0.4 N  |
| Mechanical life:       | minimum 100 000 operations   |
| Material:              | Contacts: stainless steel, silver-plated<br>Terminals: phosphor bronze, silver-plated<br>Case and actuator: HTN/LCP, black |

## Models: Switching functions

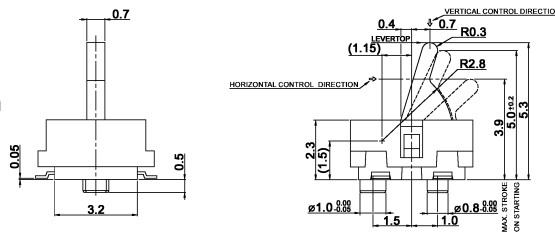
DTS 309 C-T

off – mom

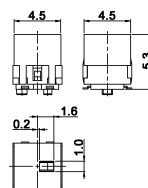


DTS 309 C T-K off – mom  
as DTS 309 C-T, but with pick & place cap

DTS 312 CP-T off – mom  
Delivery with pick & place cap



DTS 312 C-T off – mom  
as DTS 312 CP-T, but without posts



Dimensions with pick & place cap (309 and 312)

